



ACE Equity

INSTALLATION GUIDE

Learning Centre
Indian Institute of Management Indore



Introduction



सिद्धिमूलं प्रबन्धनम्
भा. प्र. सं. इन्दौर
IIM INDORE



ACE Equity, a desktop based application which gives a comprehensive and analytical statistics for Indian company information. Data includes financial and non financial information of companies and Sector. It covers Company, sector and business groups as verticals. Extensive data coverage displays financial data display as published by Companies Annual Reports.. Please contact the learning centre to install the offline database. Historical coverage: Last 15 to 20 years.



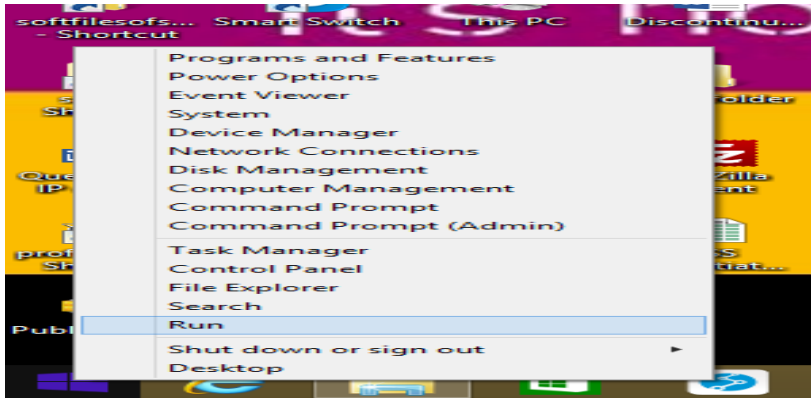
Key Features

- ❖ Database of more than 38,000 Indian companies
- ❖ Historical Financials & Share Price Data of over 15 Years
- ❖ Profit & Loss, Balance Sheet and Cash flows are directly linked with Annual report to ensure data is authentic, "as reported" by the company.
- ❖ Business Activity classification for all companies based on Products
- ❖ 13 Different industry specific financial format presentations on Profit and loss
- ❖ Corporate actions – More than 100 events updated
- ❖ Data on IPO, Data on F&O, FII Investments, and Global indices etc.
- ❖ Industry Aggregates

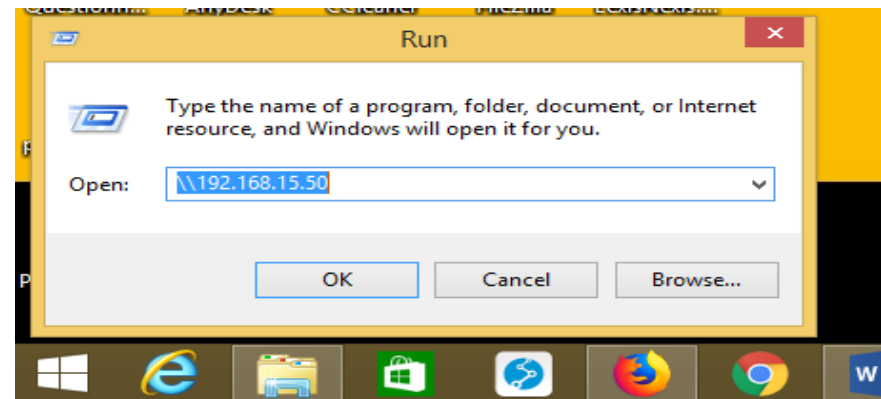


ACE equity installation steps

Step 1) Click on the start button and Go to Run



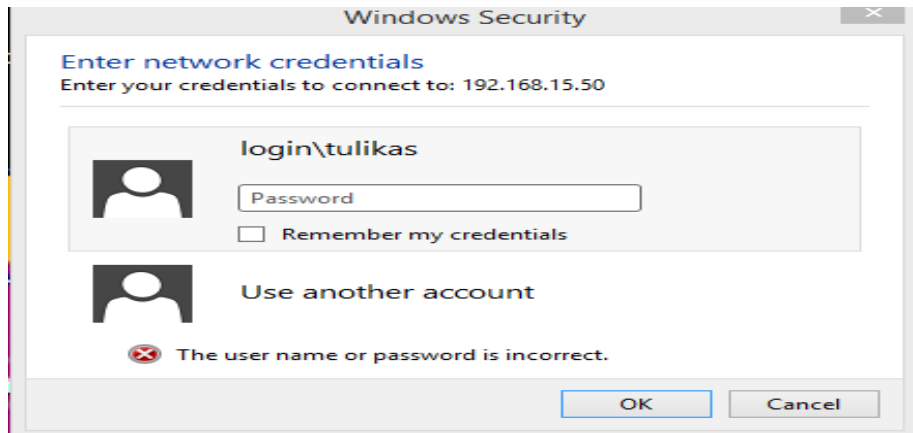
Step 2) Type [\\192.168.15.50](http://192.168.15.50)



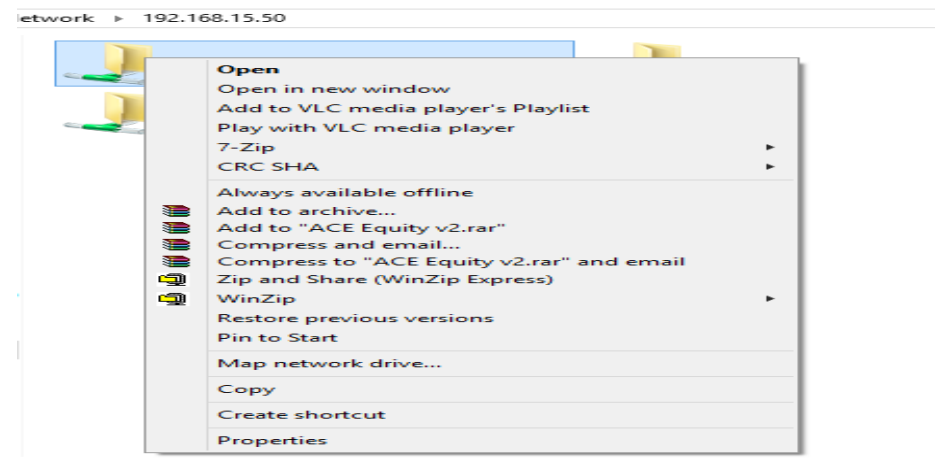


ACE equity installation steps

Step 3) Enter your network credentials



Step 4) Open ACE Equity v2

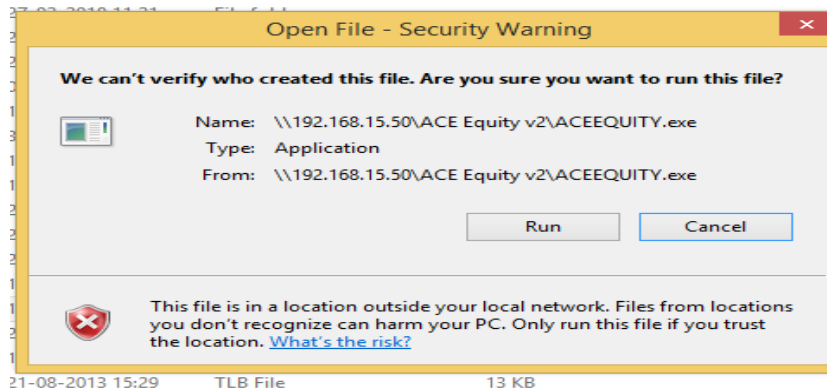




ACE equity installation steps

Step 5) Double click ACEEQUITY. Below window will appear.

Please click on Run.



Step 6) Once the below window appears, please use *admin* both as user Name & Password and click on the login button





Thank You

Please write back at
library@iimidr.ac.in
for further help/clarification.

