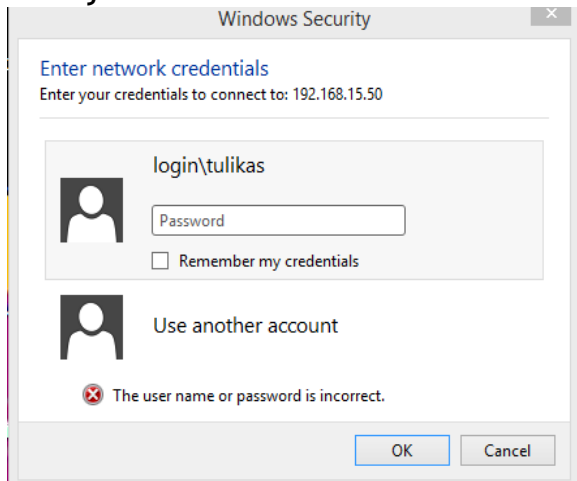


ACE Equity & MF installations steps

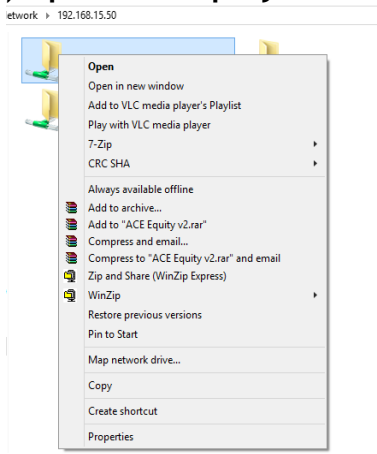
Step 1) Click on the start button and Go to Run

Step 2) Type \\192.168.15.50

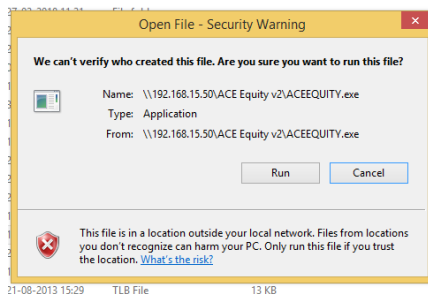
Step 3) Enter your network credentials



Step 4) Open ACE Equity v2 or acemfv2 folder



Step 5) Double click ACEEQUITY. Below window will appear.
Please click on Run.



Step 6) Once the below window appears, please use *admin* both as user Name & Password and click on the login button.



For ACE MF, the username is Admin and the Password is also Admin